

Tables and Figures for

**Year – to – Year Improvement and
Consistency in Improvement for
LAUSD Elementary Schools 1999 – 2002**

Table 1

Descriptive Statistics for School-Level Longitudinal Data and Year-to-Year Improvement: California API Index for Elementary Schools 1999-2002

 Los Angeles Unified Elementary Schools (n=418)

percentile	Yearly School Scores				Year-to-Year Improvement		
	1999	2000	2001	2002	'99-00	'00-01	'01-02
10th	388.69	423.81	474.44	525.79	11.62	4.	8.67
25th	434.	474.75	522.12	573.23	26.62	19.88	23.38
50th	492.69	538.5	592.38	636.92	41.94	37.69	45.31
75th	605.25	650.25	685.75	720.78	58.94	57.25	62.48
90th	716.25	754.5	773.12	807.7	73.12	75.69	78.86
Mean	527.29	570.2	609.	652.36	42.92	38.8	43.36
St.Dev	129.09	127.49	118.32	107.89	24.73	27.85	27.51

 California Elementary Schools (n=4658)

percentile	Yearly School Scores				Year-to-Year Improvement		
	1999	2000	2001	2002	'99-00	'00-01	'01-02
10th	450.56	494.12	525.	551.08	4.62	-11.12	-14.51
25th	523.75	568.38	594.5	618.91	18.75	3.38	-0.75
50th	631.62	674.	693.5	706.17	36.12	19.	14.35
75th	741.88	773.75	789.88	801.58	55.75	37.25	31.85
90th	819.25	846.38	858.88	867.59	75.12	56.5	50.68
Mean	633.17	671.49	692.48	708.73	38.32	20.99	16.26
St.Dev	136.63	130.82	124.37	117.53	29.08	27.58	26.62

Table 2

Descriptive Statistics for Subgroup Scores and Year-to-Year Improvement:
 California API Index for Socioeconomically Disadvantaged (SD)
 Subgroups in HighSD (> 50% SD students) Elementary Schools 1999-2002

SD Subgroups in High SD Los Angeles Unified Elementary Schools (n=353)

percentile	Yearly School Scores				Year-to-Year Improvement		
	1999	2000	2001	2002	'99-00	'00-01	'01-02
10th	380.69	418.25	466.56	517.6	11.75	10.69	14.59
25th	420.12	463.	506.	561.14	28.12	24.5	31.53
50th	465.56	511.06	558.12	611.88	43.12	42.81	50.61
75th	522.62	575.	617.12	664.36	61.81	64.75	66.15
90th	573.62	620.62	659.5	703.65	78.81	81.5	82.16
Mean	472.68	517.76	562.58	611.65	45.07	44.83	49.06
St.Dev	74.03	77.62	76.12	73.27	26.35	28.61	27.22

SD Subgroups in High SD California Elementary Schools (n=2092)

percentile	Yearly School Scores				Year-to-Year Improvement		
	1999	2000	2001	2002	'99-00	'00-01	'01-02
10th	405.81	451.12	476.81	509.22	7.25	-11.5	-10.25
25th	444.88	490.56	522.12	549.31	24.69	8.5	7.62
50th	492.06	539.75	570.25	599.36	44.38	28.	27.24
75th	543.5	594.	621.88	648.37	67.19	49.44	46.53
90th	597.25	647.12	669.88	692.69	89.44	69.	65.52
Mean	498.18	544.89	573.62	600.90	46.71	28.74	27.28
St.Dev	75.58	76.48	74.23	72.09	33.19	32.13	30.26

Consistency in Improvement for LAUSD and CA Elementary Schools 1999-2002

LAUSD Elementary Schools

=====

Consecutive Improvement for LAUSD Elementary Schools (n=418)

Three year Improvement 1999-2001

Schools improving 1999-2000: 406
Proportion of those also improving 2000-2001: 0.938
Amount of Improvement 2000-2001
{lowest decile lower quartile median upper quartile}
4 19.6 36.9 56.2

Schools improving at least the statewide median (36 points)
in 1999-2000: 253
Proportion of those also improving 2000-2001: 0.945
Amount of Improvement 2000-2001
{lowest decile lower quartile median upper quartile}
4.1 19.6 36.9 57.4

Fourth-year Improvement, 1999-2002
Schools improving both in 1999-2000 and 2000-2001: 381
Proportion of those also improving 2001-2002: 0.955
Amount of Improvement 2001-2002
{lowest decile lower quartile median upper quartile}
9. 24.1 45.6 62.4

Schools improving at least the statewide median (36 points)
1999-2000 and statewide median (19 points) 2000-2001: 193
Proportion of those also improving 2001-2002: 0.953
Amount of Improvement 2001-2002
{lowest decile lower quartile median upper quartile}
11.2 25.5 45.7 58.9

=====

Statewide California Comparisons

Consecutive Improvement for California Elementary Schools (n=4658)

Three year Improvement 1999-2001

Schools improving 1999-2000: 4321
Proportion of those also improving 2000-2001: 0.785
Amount of Improvement 2000-2001
{lowest decile lower quartile median upper quartile}
-11.5 2.8 18. 36.3

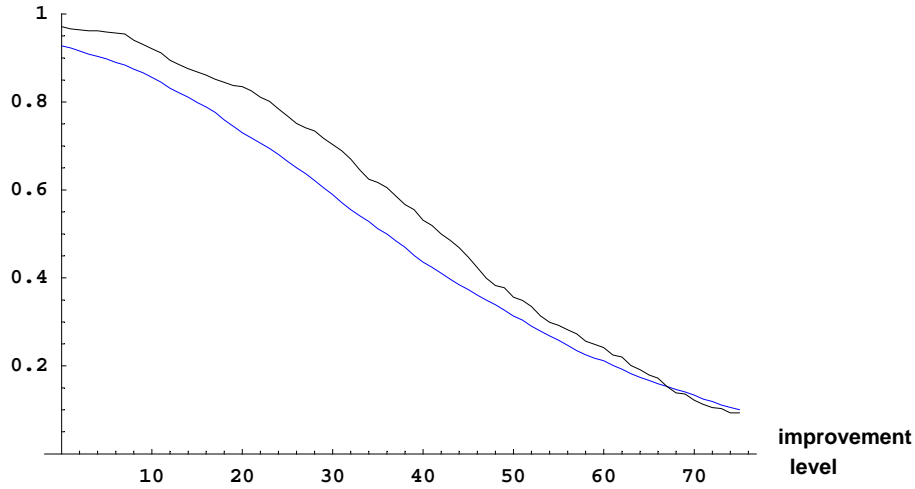
Schools improving at least the statewide median (36 points)
in 1999-2000: 2328
Proportion of those also improving 2000-2001: 0.755
Amount of Improvement 2000-2001
{lowest decile lower quartile median upper quartile}
-14.6 0.5 17.5 35.8

Fourth-year Improvement, 1999-2002
Schools improving both in 1999-2000 and 2000-2001: 3390
Proportion of those also improving 2001-2002: 0.733
Amount of Improvement 2001-2002
{lowest decile lower quartile median upper quartile}
-14.6 -1. 13.9 31.

Schools improving at least the statewide median (36 points)
1999-2000 and statewide median (19 points) 2000-2001: 1111
Proportion of those also improving 2001-2002: 0.755
Amount of Improvement 2001-2002
{lowest decile lower quartile median upper quartile}
-13.7 0.5 16.1 34.2
=====

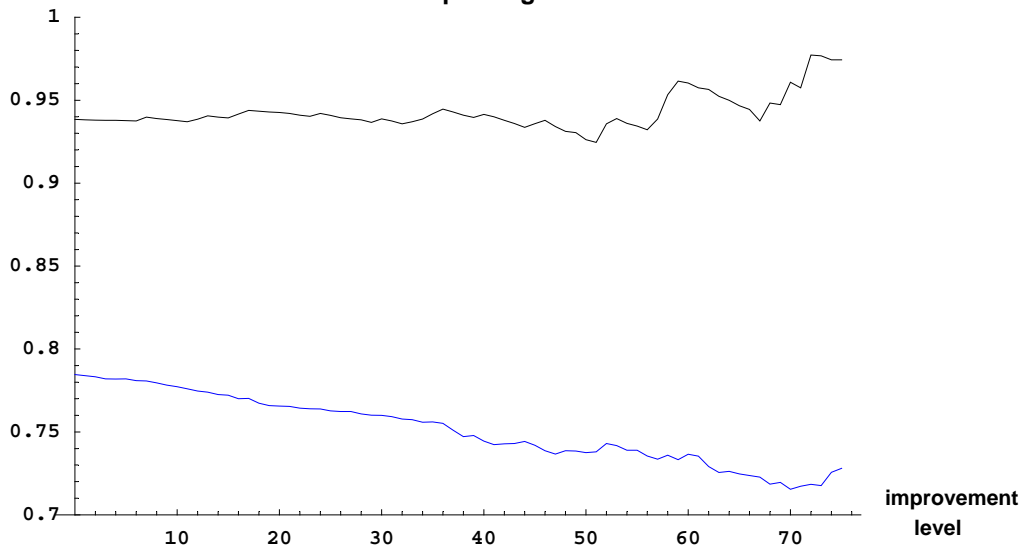
Elementary School API Scores; LAUSD (black), CA (blue)

proportion improving
implevel 1999–2000



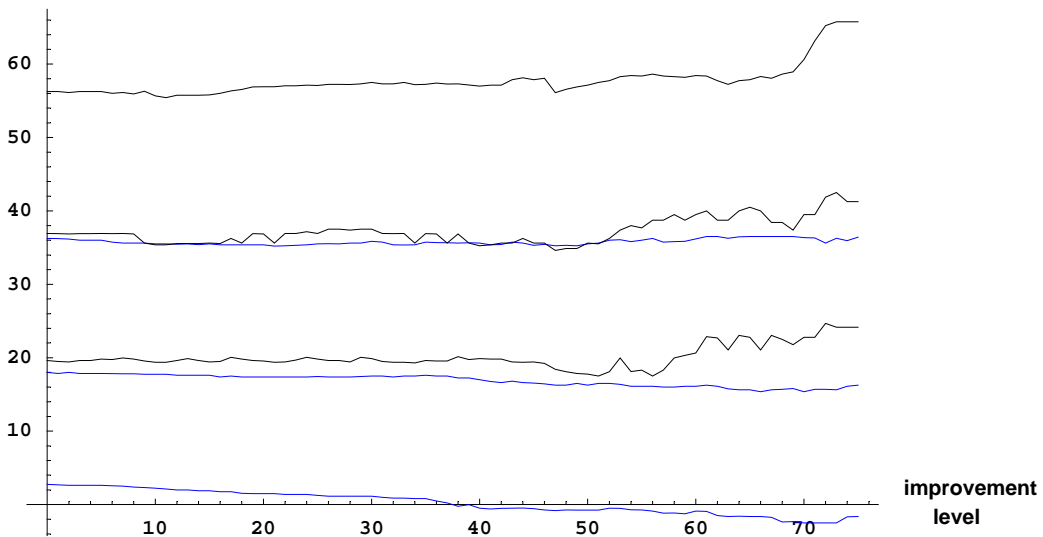
proportion improving
2000–2001

proportion improving at least implevel 1999–2000
and also improving 2000–2001



Improvement
2000–2001

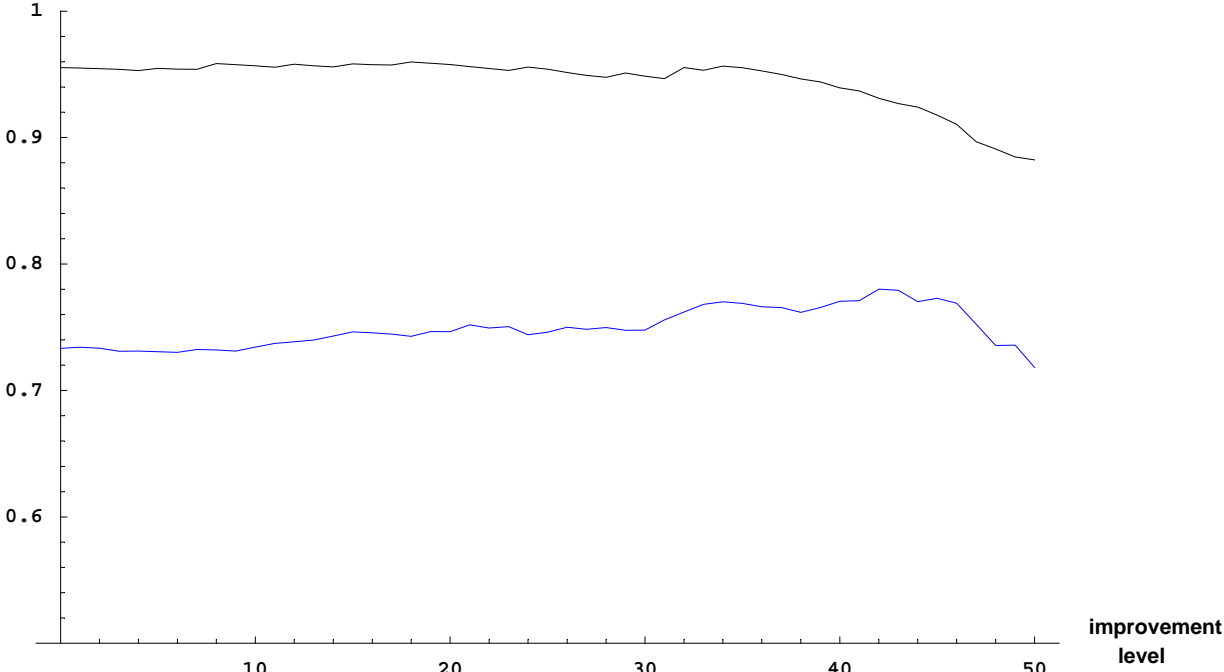
Median, Quartiles of 2000–2001 Improvement
for schools improving at least implevel 1999–2000



Elementary School API Scores (Year 4); LAUSD (black), CA (blue)

proportion
improving
2001-2002

proportion improving at least implevel 1999-2000 and 2000-1
and also improving 2001-2002



proportion
improving
2001-2002

proportion of schools that improved at least
fraction of median improvement
1999-2000 and 2000-2001
also improving 2001-2002

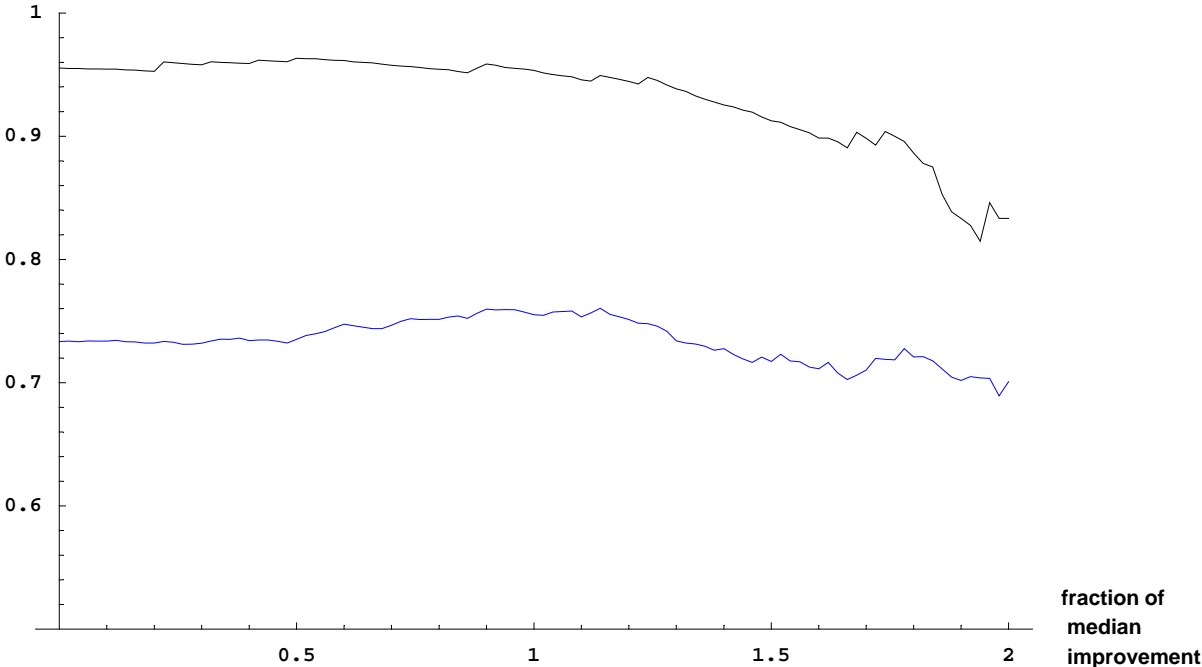


Table 3A

Consecutive Improvement for Los Angeles Unified Elementary Schools (n=418)

Three year Improvement 1999-2001			
ImpLevel 1999-2000	Number exceeding ImpLevel	Proportion of those improving 2000-2001	Amount of Improvement 2000-2001 {lowest decile lower quartile median upper quartile}
0	406	0.938	4. 19.6 36.9 56.2
25	321	0.941	4.1 19.8 36.9 57.1
50	149	0.926	3.1 17.8 35.6 57.1
75	39	0.974	6.4 24.2 41.2 65.8
100	9	1.	12.2 30.2 54.4 78.8
Fourth-year Improvement, 1999-2002			
ImpLevel 1999-2000 and 2000-2001	Number exceeding both ImpLevels	Proportion of those improving 2001-2002	Amount of Improvement 2001-2002 {lowest decile lower quartile median upper quartile}
0	381	0.955	9. 24.1 45.6 62.4
25	218	0.954	8.8 25. 45.6 59.2
50	51	0.882	-2.1 24.2 40.8 55.7

Table 3B

Consecutive Improvement for California Elementary Schools (n=4658)

Three year Improvement 1999-2001			
ImpLevel 1999-2000	Number exceeding ImpLevel	Proportion of those improving 2000-2001	Amount of Improvement 2000-2001 {lowest decile lower quartile median upper quartile}
0	4321	0.785	-11.5 2.8 18. 36.3
25	3098	0.763	-13.5 1.2 17.4 35.5
50	1459	0.737	-18.5 -0.8 16.2 35.5
75	467	0.728	-19.5 -1.6 16.4 36.5
100	129	0.674	-30.4 -6.7 16. 41.
Fourth-year Improvement, 1999-2002			
ImpLevel 1999-2000 and 2000-2001	Number exceeding both ImpLevels	Proportion of those improving 2001-2002	Amount of Improvement 2001-2002 {lowest decile lower quartile median upper quartile}
0	3390	0.733	-14.6 -1. 13.9 31.
25	1201	0.746	-15.3 -0.3 15.9 34.1
50	181	0.718	-18. -1.5 19. 40.2

Consecutive Improvement for SD Subgroups in
High SD LAUSD Elementary Schools (n=353)
1999-2002

=====
Three year Improvement 1999-2001

SD Subgroups improving 1999-2000: 341
Proportion of those also improving 2000-2001: 0.944
Amount of Improvement 2000-2001
{lowest decile lower quartile median upper quartile}
11.3 24.3 42.8 63.9

SD Subgroups improving at least the statewide median (44 points)
in 1999-2000: 174
Proportion of those also improving 2000-2001: 0.92
Amount of Improvement 2000-2001
{lowest decile lower quartile median upper quartile}
4.6 22.1 41.8 61.3

Fourth-year Improvement, 1999-2002
SD Subgroups improving both in 1999-2000 and 2000-2001: 322
Proportion of those also improving 2001-2002: 0.972
Amount of Improvement 2001-2002
{lowest decile lower quartile median upper quartile}
15.1 32.7 50.3 65.7

SD Subgroups improving at least the statewide median (44 points)
1999-2000 and statewide median (28 points) 2000-2001: 118
Proportion of those also improving 2001-2002: 0.949
Amount of Improvement 2001-2002
{lowest decile lower quartile median upper quartile}
10.9 26.7 46.2 61.7
=====

Consecutive Improvement for SD Subgroups in High SD
California Elementary Schools (n=2092)

=====
Three year Improvement 1999-2001

SD Subgroups improving 1999-2000: 1966
Proportion of those also improving 2000-2001: 0.816
Amount of Improvement 2000-2001
{lowest decile lower quartile median upper quartile}
-12.2 7.6 26.8 48.2

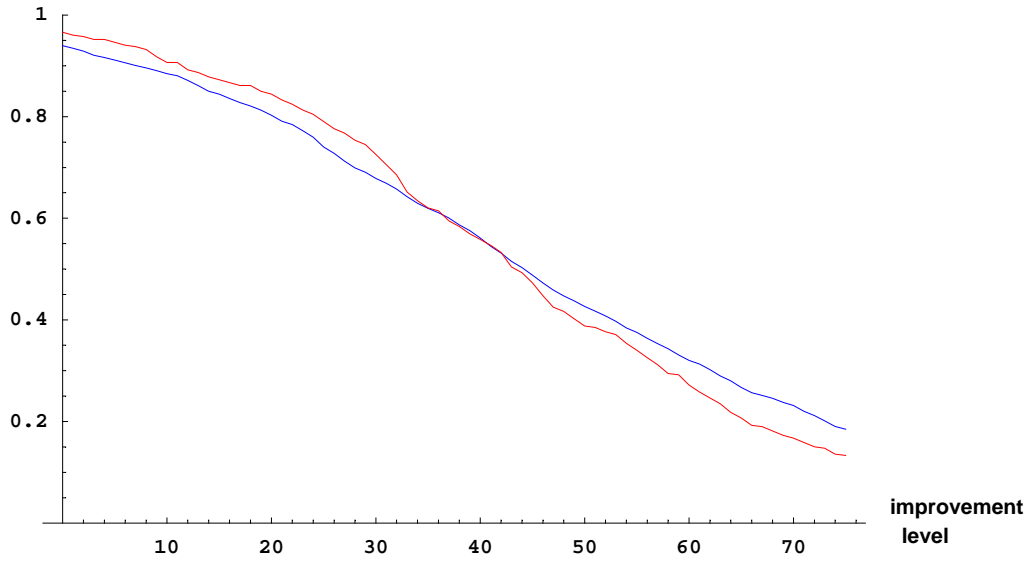
SD Subgroups improving at least the statewide median (44 points)
in 1999-2000: 1052
Proportion of those also improving 2000-2001: 0.779
Amount of Improvement 2000-2001
{lowest decile lower quartile median upper quartile}
-16.2 3.5 22.3 44.4

Fourth-year Improvement, 1999-2002
SD Subgroups improving both in 1999-2000 and 2000-2001: 1605
Proportion of those also improving 2001-2002: 0.824
Amount of Improvement 2001-2002
{lowest decile lower quartile median upper quartile}
-11.1 7.2 26.7 45.1

SD Subgroups improving at least the statewide median (44 points)
1999-2000 and statewide median (28 points) 2000-2001: 463
Proportion of those also improving 2001-2002: 0.799
Amount of Improvement 2001-2002
{lowest decile lower quartile median upper quartile}
-12.9 4.3 25.6 44.3

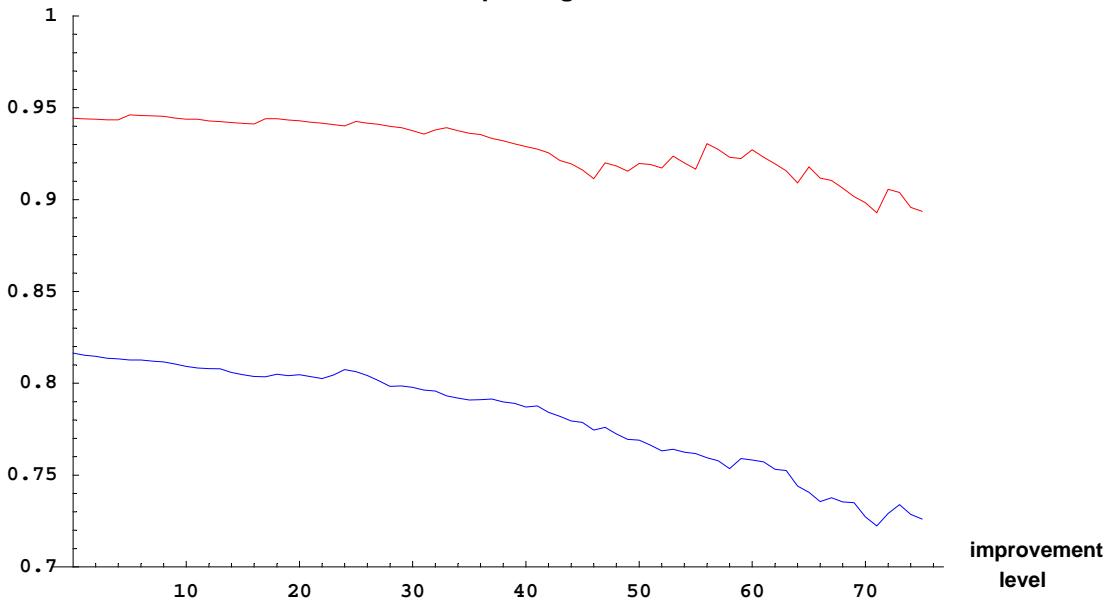
SD Subgroups in HighSD Elementary Schools; LAUSD (red), CA (blue)

proportion improving
implevel 1999–2000



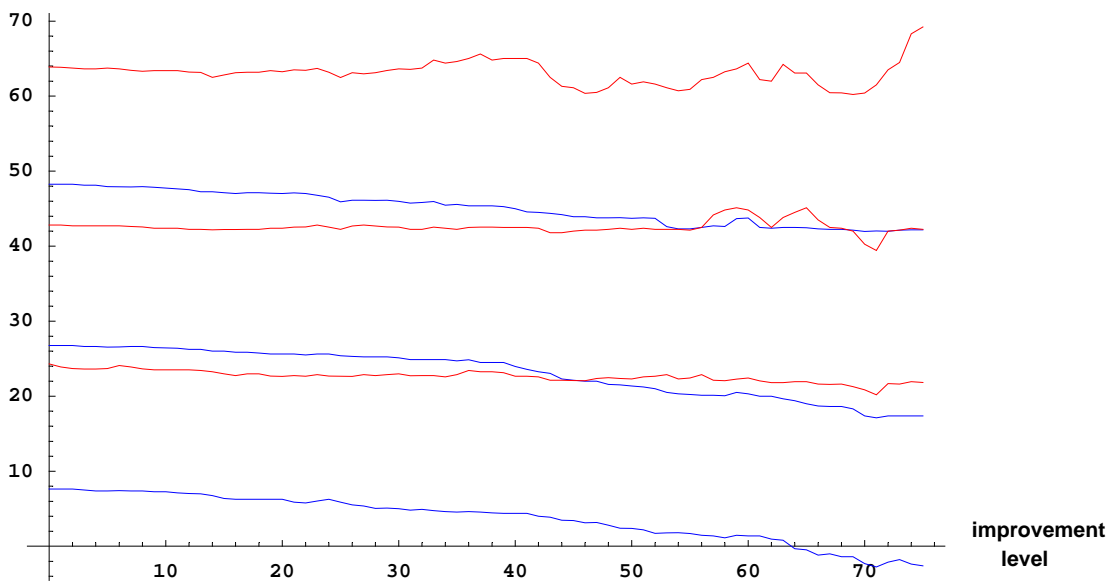
proportion
improving
2000–2001

proportion improving at least implevel 1999–2000
and also improving 2000–2001



Improvement
2000–2001

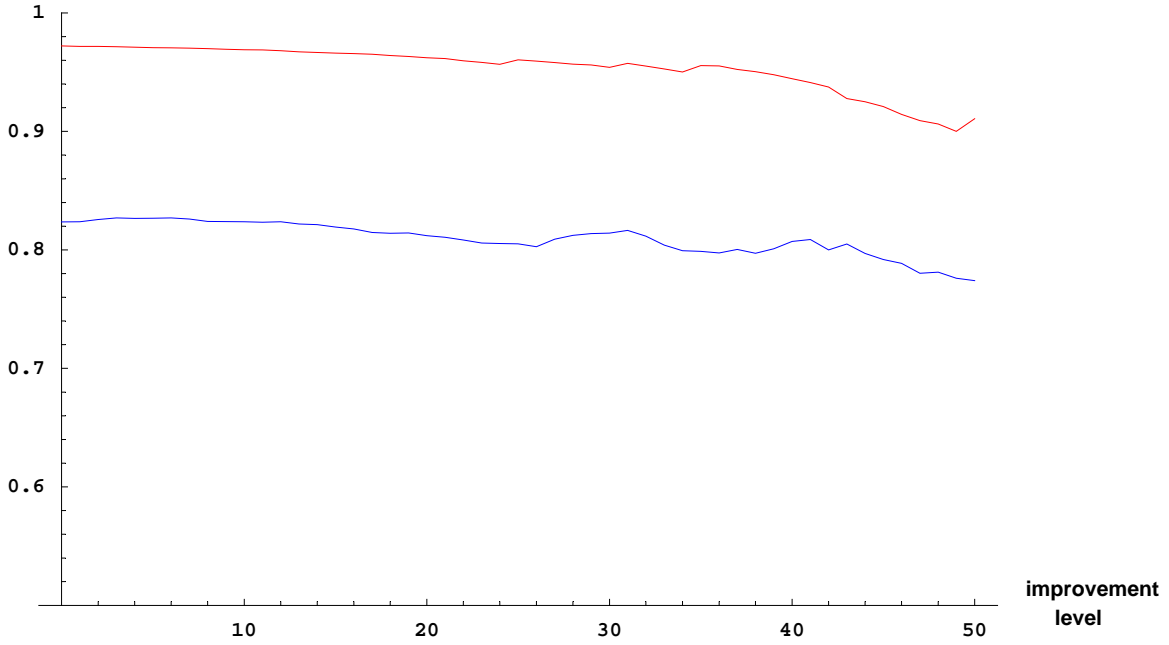
Median, Quartiles of 2000–2001 Improvement
for schools improving at least implevel 1999–2000



SD Subgroups in HighSD Elementary Schools (Year 4); LAUSD (red), CA (blue)

proportion
improving
2001–2002

proportion improving at least implevel 1999–2000 and 2000–1
and also improving 2001–2002



proportion
improving
2001–2002

proportion of schools that improved at least
fraction of median improvement
1999–2000 and 2000–2001
also improving 2001–2002

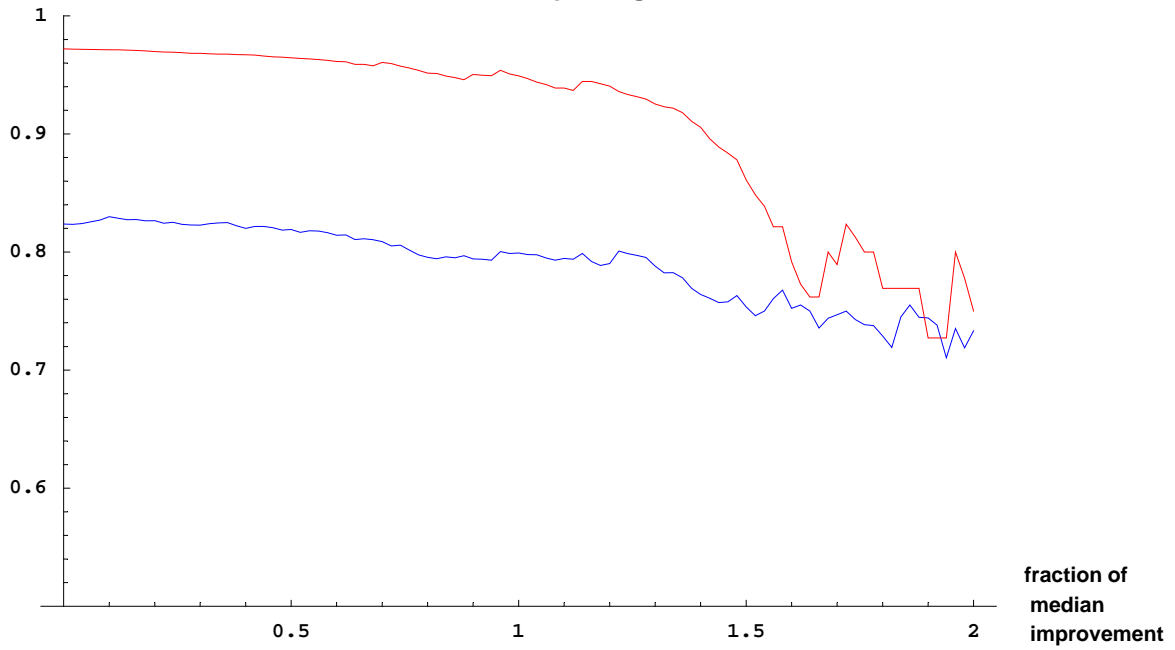


Table 4A Consecutive Improvement for SD Subgroups in High SD
 Los Angeles Unified Elementary Schools (n=353)

Three year Improvement 1999-2001			
ImpLevel 1999-2000	Number exceeding ImpLevel	Proportion of those improving 2000-2001	Amount of Improvement 2000-2001 {lowest decile lower quartile median upper quartile}
0	341	0.944	11.3 24.3 42.8 63.9
25	279	0.943	8.9 22.7 42.2 62.5
50	137	0.92	4.4 22.3 42.2 61.6
75	47	0.894	1.7 21.8 42.2 69.2
100	11	0.909	8.6 21.6 42.2 70.3
Fourth-year Improvement, 1999-2002			
ImpLevel 1999-2000 and 2000-2001	Number exceeding both ImpLevels	Proportion of those improving 2001-2002	Amount of Improvement 2001-2002 {lowest decile lower quartile median upper quartile}
0	322	0.972	15.1 32.7 50.3 65.7
25	202	0.96	14.2 29.9 47.3 61.5
50	56	0.911	6.4 24.3 41.2 58.5

Table 4B Consecutive Improvement for SD Subgroups in High SD California Elementary Schools (n=2092)

ImpLevel 1999-2000	Number exceeding ImpLevel	Three year Improvement 1999-2001	
		Proportion of those improving 2000-2001	Amount of Improvement 2000-2001 {lowest decile lower quartile median upper quartile}
0	1966	0.816	-11.9 7.6 26.8 48.2
25	1549	0.806	-13. 6. 25.3 46.
50	892	0.769	-18.4 2.1 21.3 43.8
75	387	0.726	-22. -3.7 17.4 42.1
100	136	0.684	-27.5 -5.8 20.9 42.2
ImpLevel 1999-2000 and 2000-2001	Number exceeding both ImpLevels	Fourth-year Improvement, 1999-2002	
		Proportion of those improving 2001-2002	Amount of Improvement 2001-2002 {lowest decile lower quartile median upper quartile}
0	1605	0.824	-10.1 7.2 26.7 45.3
25	780	0.805	-12.9 5.6 26. 43.9
50	177	0.774	-18.1 3.2 25. 47.1