

Year-to-Year Improvement, Consistency in Improvement, and Achievement Gaps for LAUSD Elementary Schools, 1999-2002

Contents

A. District as a Collection of Individual Students

Table 1. Los Angeles Unified Four Years of API Index (Stanford 9) for Indicated Grade Ranges and Student Groups.

Table 2. California Comparison: Four Years of API Index (Stanford 9) for Indicated Grade Ranges and Student Groups

Table 3. Los Angeles Unified Four Years of Stanford 9 Math (proportion at or above 60th percentile) for Indicated Grade Ranges and Student Groups

Table 4. Los Angeles Unified Four Years of Stanford 9 Reading (proportion at or above 60th percentile) for Indicated Grade Ranges and Student Groups

B. District as a Collection of Schools: Improvement and Consistency in Improvement for Schools and Subgroups

Table 5. Descriptive Statistics for School-Level Longitudinal Data and Year-to-Year Improvement: California API Index for Elementary Schools 1999-2002

Table 6. Descriptive Statistics for Subgroup Scores and Year-to-Year Improvement: California API Index for Socioeconomically Disadvantaged (SD) Subgroups in HighSD (> 50% SD students) Elementary Schools 1999-2002

Exhibit 1. Consistency in Improvement for LAUSD Elementary Schools 1999-2002

Exhibit 2. Statewide California Comparisons: Consecutive Improvement for California Elementary Schools.

Figure 1. Consecutive Improvement for California and LAUSD Elementary Schools, 1999-2001.

Figure 2. Consecutive Improvement for California and LAUSD Elementary Schools, 1999-2002.

Table 7. Consecutive Improvement for Los Angeles Unified Elementary Schools (n=418)

Table 8. Consecutive Improvement for California Elementary Schools (n=4658)

Exhibit 3. Consecutive Improvement for SD Subgroups in High SD LAUSD Elementary Schools (n=353) 1999-2002

Exhibit 4. Consecutive Improvement for SD Subgroups in High SD California Elementary Schools (n=2092)

Figure 3. Consecutive Improvement for SD subgroups in HighSD California and LAUSD Elementary Schools, 1999-2001.

Figure 4. Consecutive Improvement for SD subgroups in HighSD California and LAUSD Elementary Schools, 1999-2002.

Table 9. Consecutive Improvement for SD Subgroups in High SD Los Angeles Unified Elementary Schools (n=353)

Table 10. Consecutive Improvement for SD Subgroups in High SD California Elementary Schools (n=2092)

Table 11. Consecutive Improvement for Hispanic subgroups in Los Angeles Unified Elementary Schools (n=336)

Table 12. Consecutive Improvement for Hispanic Subgroups in HighSD Los Angeles Unified Elementary Schools (n=324)

C. (Closing) Achievement Gaps in Subgroup Scores

Table 13. Achievement Gaps, differences in percents and differences in percentiles, White vs Hispanic, SAT-9 Grade 4 Reading 1999-2002 with SD conditioning

Figures 5-8. White and Hispanic cdf plots followed by the plots of changes in the gaps in the vertical and horizontal directions.

Add California state comparison.

Individual level description, LAUSD Stanford 9

Table 1

Los Angeles Unified Four Years of API Index (Stanford 9)
for Indicated Grade Ranges and Student Groups

Grades Included	1999	2000	2001	2002	Improvement '99-02
Grades 2-6					
All Students	498.4	537.15	570.45	609.08	110.69
SD Students	458.94	498.12	535.95	578.75	119.81
SD Students in HighSD Schools	452.15	491.97	530.71	574.25	122.1
Grades 2-8					
All Students	499.19	531.87	558.38	589.41	90.21
SD Students	459.41	492.51	523.7	558.86	99.45
SD Students in HighSD Schools	452.14	485.9	517.88	554.07	101.93
Grades 9-11					
All Students	520.74	527.15	527.31	532.98	12.24
SD Students	479.62	487.11	489.86	495.74	16.12
SD Students in HighSD Schools	473.82	481.75	484.19	491.79	17.97
Grades 2-11					
All Students	504.59	530.7	550.9	575.13	70.54
SD Students	463.73	491.35	516.67	545.12	81.4
SD Students in HighSD Schools	456.56	485.05	511.26	541.13	84.57

Improvement 1999-02 Grade-by-grade for Student Groups

Grade	All Students	SD Students	SD Students in HighSD Schools
2	135.62	147.31	148.62
3	133.06	144.69	146.81
4	127.62	137.69	140.06
5	88.5	93.75	95.38
6	62.75	63.88	65.12
7	35.75	33.88	33.94
8	24.44	24.81	26.
9	10.88	15.25	16.94
10	12.62	16.06	18.31
11	17.	18.5	20.38

Artificial Cohort Comparisons

Grades 2-3 In 1999	1999	2000	2001	2002	Improvement '99-02
All Students	507.24	539.74	552.69	573.04	65.8
SD Students	469.22	500.61	514.89	537.52	68.29
SD Students in HighSD Schools	463.76	494.66	509.43	530.73	66.96

Table 2

California Four Years of API Index (Stanford 9)
for Indicated Grade Ranges and Student Groups

Grades Included	1999	2000	2001	2002	Improvement '99-02
Grades 2-6					
All Students	616.84	650.82	669.4	686.09	69.25
SD Students	503.92	545.29	569.48	594.5	90.57
SD Students in HighSD Schools	482.21	523.87	550.29	578.14	95.94
Grades 2-8					
All Students	618.49	647.97	664.05	677.48	58.99
SD Students	503.16	539.47	560.8	581.91	78.75
SD Students in HighSD Schools	480.97	517.57	541.32	565.25	84.28
Grades 9-11					
All Students	601.43	611.76	612.15	613.91	12.48
SD Students	482.52	493.28	493.2	498.61	16.09
SD Students in HighSD Schools	464.43	471.77	474.86	481.24	16.81
Grades 2-11					
All Students	613.82	638.04	650.05	659.74	45.92
SD Students	498.85	529.71	546.91	564.01	65.16
SD Students in HighSD Schools	478.38	510.43	531.25	552.08	73.69

Table 3

Los Angeles Unified Four Years of Stanford 9 Math (proportion at or above 60th percentile) for Indicated Grade Ranges and Student Groups

Grades Included	1999	2000	2001	2002	Improvement '99-02
Grades 2-6					
All Students	0.23	0.27	0.3	0.35	0.12
SD Students	0.18	0.22	0.26	0.31	0.13
SD Students in HighSD Schools	0.18	0.21	0.25	0.31	0.13
Grades 2-8					
All Students	0.22	0.25	0.28	0.31	0.09
SD Students	0.17	0.2	0.23	0.27	0.1
SD Students in HighSD Schools	0.16	0.2	0.23	0.27	0.11
Grades 9-11					
All Students	0.21	0.21	0.21	0.2	-0.01
SD Students	0.16	0.16	0.17	0.16	0.
SD Students in HighSD Schools	0.15	0.16	0.16	0.16	0.01
Grades 2-11					
All Students	0.22	0.24	0.26	0.28	0.07
SD Students	0.17	0.19	0.22	0.25	0.08
SD Students in HighSD Schools	0.16	0.19	0.21	0.25	0.09

Improvement 1999-02 Grade-by-grade for Student Groups

Grade	All Students	SD Students	SD Students in HighSD Schools
2	0.14	0.15	0.15
3	0.16	0.17	0.17
4	0.13	0.14	0.14
5	0.09	0.09	0.1
6	0.07	0.07	0.07
7	0.03	0.02	0.02
8	0.01	0.01	0.01
9	-0.01	0.	0.01
10	0.	0.01	0.02
11	-0.01	0.	0.01

Artificial Cohort Comparisons

Grades In 1999	1999	2000	2001	2002	Improvement '99-02
2-3					
All Students	0.26	0.28	0.27	0.29	0.03
SD Students	0.22	0.23	0.22	0.25	0.03
SD Students in HighSD Schools	0.21	0.22	0.21	0.24	0.03

Table 4

Los Angeles Unified Four Years of Stanford 9 Reading (proportion at or above 60th percentile) for Indicated Grade Ranges and Student Groups

Grades Included	1999	2000	2001	2002	Improvement '99-02
Grades 2-6					
All Students	0.16	0.19	0.21	0.23	0.08
SD Students	0.1	0.13	0.16	0.18	0.08
SD Students in HighSD Schools	0.09	0.12	0.15	0.18	0.08
Grades 2-8					
All Students	0.16	0.19	0.21	0.22	0.06
SD Students	0.11	0.13	0.15	0.17	0.07
SD Students in HighSD Schools	0.1	0.12	0.14	0.17	0.07
Grades 9-11					
All Students	0.13	0.14	0.14	0.13	0.
SD Students	0.08	0.08	0.09	0.08	0.
SD Students in HighSD Schools	0.07	0.08	0.08	0.08	0.01
Grades 2-11					
All Students	0.16	0.17	0.19	0.2	0.04
SD Students	0.1	0.12	0.14	0.15	0.05
SD Students in HighSD Schools	0.09	0.11	0.13	0.15	0.06

 Improvement 1999-02 Grade-by-grade for Student Groups

Grade	All Students	SD Students	SD Students in HighSD Schools
2	0.14	0.16	0.16
3	0.08	0.08	0.08
4	0.08	0.09	0.09
5	0.04	0.04	0.04
6	0.03	0.03	0.03
7	0.02	0.01	0.01
8	0.01	0.01	0.01
9	-0.01	0.	0.
10	0.	0.01	0.01
11	0.01	0.01	0.01

Table 5

Descriptive Statistics for School-Level Longitudinal Data and Year-to-Year Improvement: California API Index for Elementary Schools 1999-2002

Los Angeles Unified Elementary Schools (n=418)

percentile	Yearly School Scores				Year-to-Year Improvement		
	1999	2000	2001	2002	'99-00	'00-01	'01-02
10th	388.69	423.81	474.44	525.79	11.62	4.	8.67
25th	434.	474.75	522.12	573.23	26.62	19.88	23.38
50th	492.69	538.5	592.38	636.92	41.94	37.69	45.31
75th	605.25	650.25	685.75	720.78	58.94	57.25	62.48
90th	716.25	754.5	773.12	807.7	73.12	75.69	78.86
Mean	527.29	570.2	609.	652.36	42.92	38.8	43.36
St.Dev	129.09	127.49	118.32	107.89	24.73	27.85	27.51

California Elementary Schools (n=4658)

percentile	Yearly School Scores				Year-to-Year Improvement		
	1999	2000	2001	2002	'99-00	'00-01	'01-02
10th	450.56	494.12	525.	551.08	4.62	-11.12	-14.51
25th	523.75	568.38	594.5	618.91	18.75	3.38	-0.75
50th	631.62	674.	693.5	706.17	36.12	19.	14.35
75th	741.88	773.75	789.88	801.58	55.75	37.25	31.85
90th	819.25	846.38	858.88	867.59	75.12	56.5	50.68
Mean	633.17	671.49	692.48	708.73	38.32	20.99	16.26
St.Dev	136.63	130.82	124.37	117.53	29.08	27.58	26.62

Table 6.
 Descriptive Statistics for Subgroup Scores and Year-to-Year Improvement:
 California API Index for Socioeconomically Disadvantaged (SD)
 Subgroups in HighSD (> 50% SD students) Elementary Schools 1999-2002

SD Subgroups in High SD Los Angeles Unified Elementary Schools (n=353)

percentile	Yearly School Scores				Year-to-Year Improvement		
	1999	2000	2001	2002	'99-00	'00-01	'01-02
10th	380.69	418.25	466.56	517.6	11.75	10.69	14.59
25th	420.12	463.	506.	561.14	28.12	24.5	31.53
50th	465.56	511.06	558.12	611.88	43.12	42.81	50.61
75th	522.62	575.	617.12	664.36	61.81	64.75	66.15
90th	573.62	620.62	659.5	703.65	78.81	81.5	82.16
Mean	472.68	517.76	562.58	611.65	45.07	44.83	49.06
St.Dev	74.03	77.62	76.12	73.27	26.35	28.61	27.22

SD Subgroups in High SD California Elementary Schools (n=2092)

percentile	Yearly School Scores				Year-to-Year Improvement		
	1999	2000	2001	2002	'99-00	'00-01	'01-02
10th	405.81	451.12	476.81	509.22	7.25	-11.5	-10.25
25th	444.88	490.56	522.12	549.31	24.69	8.5	7.62
50th	492.06	539.75	570.25	599.36	44.38	28.	27.24
75th	543.5	594.	621.88	648.37	67.19	49.44	46.53
90th	597.25	647.12	669.88	692.69	89.44	69.	65.52
Mean	498.18	544.89	573.62	600.90	46.71	28.74	27.28
St.Dev	75.58	76.48	74.23	72.09	33.19	32.13	30.26

Exhibit 1.

Consistency in Improvement for LAUSD Elementary Schools 1999-2002

LAUSD Elementary Schools

=====

Consecutive Improvement for LAUSD Elementary Schools (n=418)

Three year Improvement 1999-2001

Schools improving 1999-2000: 406
Proportion of those also improving 2000-2001: 0.938
Amount of Improvement 2000-2001
{lowest decile lower quartile median upper quartile}
4 19.6 36.9 56.2

Schools improving at least the statewide median (36 points)
in 1999-2000: 253
Proportion of those also improving 2000-2001: 0.945
Amount of Improvement 2000-2001
{lowest decile lower quartile median upper quartile}
4.1 19.6 36.9 57.4

Fourth-year Improvement, 1999-2002
Schools improving both in 1999-2000 and 2000-2001: 381
Proportion of those also improving 2001-2002: 0.955
Amount of Improvement 2001-2002
{lowest decile lower quartile median upper quartile}
9. 24.1 45.6 62.4

Schools improving at least the statewide median (36 points)
1999-2000 and statewide median (19 points) 2000-2001: 193
Proportion of those also improving 2001-2002: 0.953
Amount of Improvement 2001-2002
{lowest decile lower quartile median upper quartile}
11.2 25.5 45.7 58.9

=====

Exhibit 2. Statewide California Comparisons:

Consecutive Improvement for California Elementary Schools (n=4658)

Three year Improvement 1999-2001

Schools improving 1999-2000: 4321

Proportion of those also improving 2000-2001: 0.785

Amount of Improvement 2000-2001

{lowest decile lower quartile median upper quartile}
-11.5 2.8 18. 36.3

Schools improving at least the statewide median (36 points)
in 1999-2000: 2328

Proportion of those also improving 2000-2001: 0.755

Amount of Improvement 2000-2001

{lowest decile lower quartile median upper quartile}
-14.6 0.5 17.5 35.8

Fourth-year Improvement, 1999-2002

Schools improving both in 1999-2000 and 2000-2001: 3390

Proportion of those also improving 2001-2002: 0.733

Amount of Improvement 2001-2002

{lowest decile lower quartile median upper quartile}
-14.6 -1. 13.9 31.

Schools improving at least the statewide median (36 points)
1999-2000 and statewide median (19 points) 2000-2001: 1111

Proportion of those also improving 2001-2002: 0.755

Amount of Improvement 2001-2002

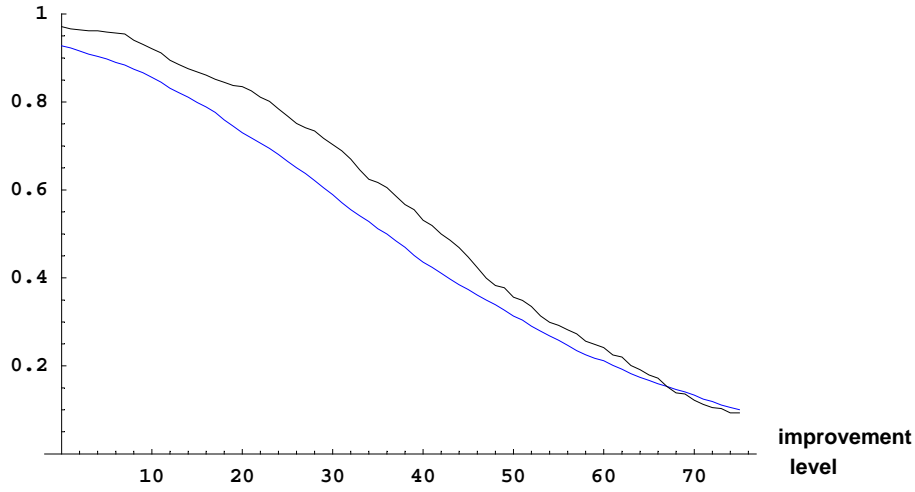
{lowest decile lower quartile median upper quartile}
-13.7 0.5 16.1 34.2

=====

Figure 1.

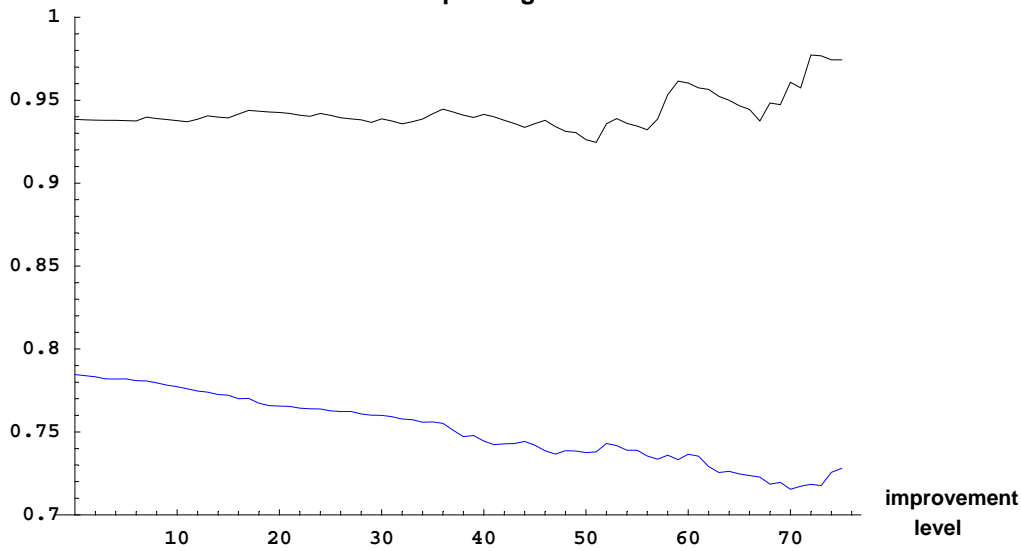
Elementary School API Scores; LAUSD (black), CA (blue)

proportion improving
implevel 1999–2000



proportion
improving
2000–2001

proportion improving at least implevel 1999–2000
and also improving 2000–2001



Improvement
2000–2001

Median, Quartiles of 2000–2001 Improvement
for schools improving at least implevel 1999–2000

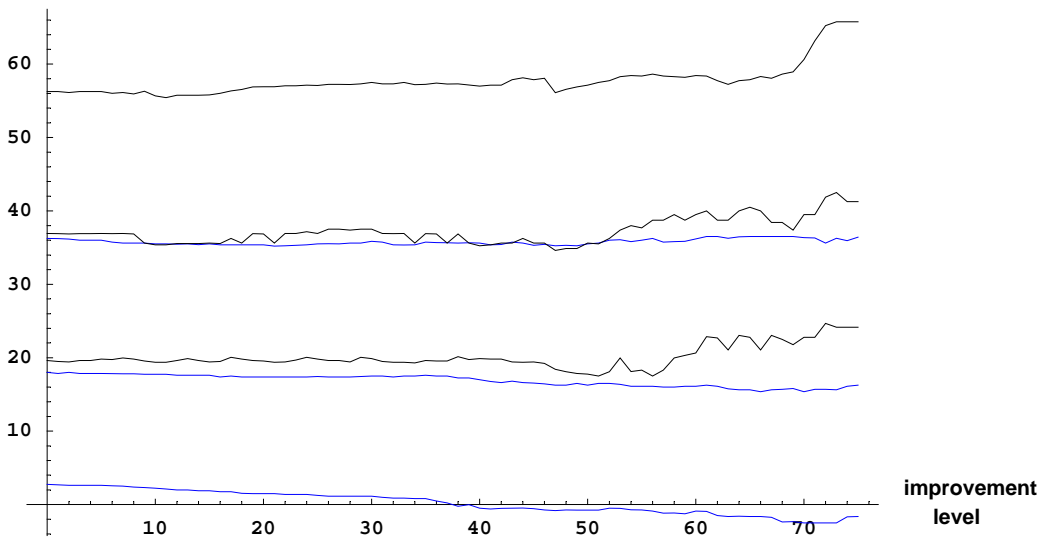


Figure 2.

Elementary School API Scores (Year 4); LAUSD (black), CA (blue)

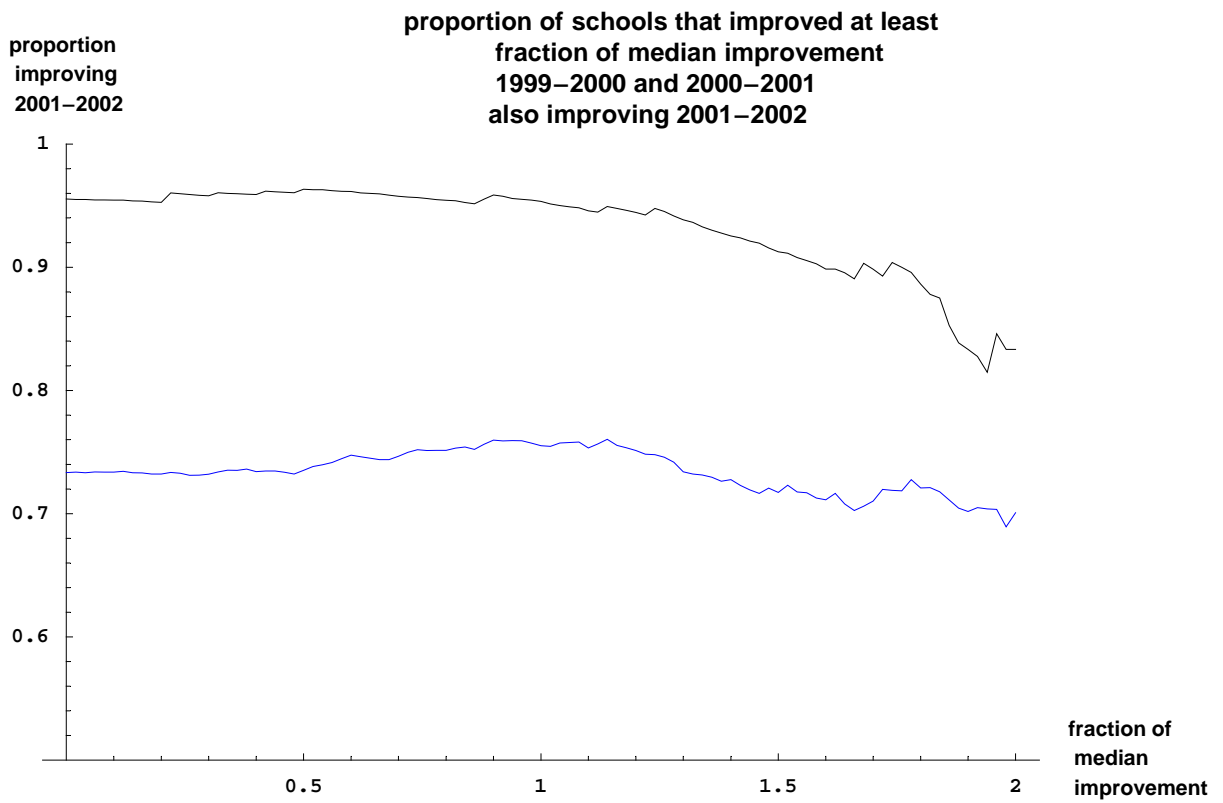
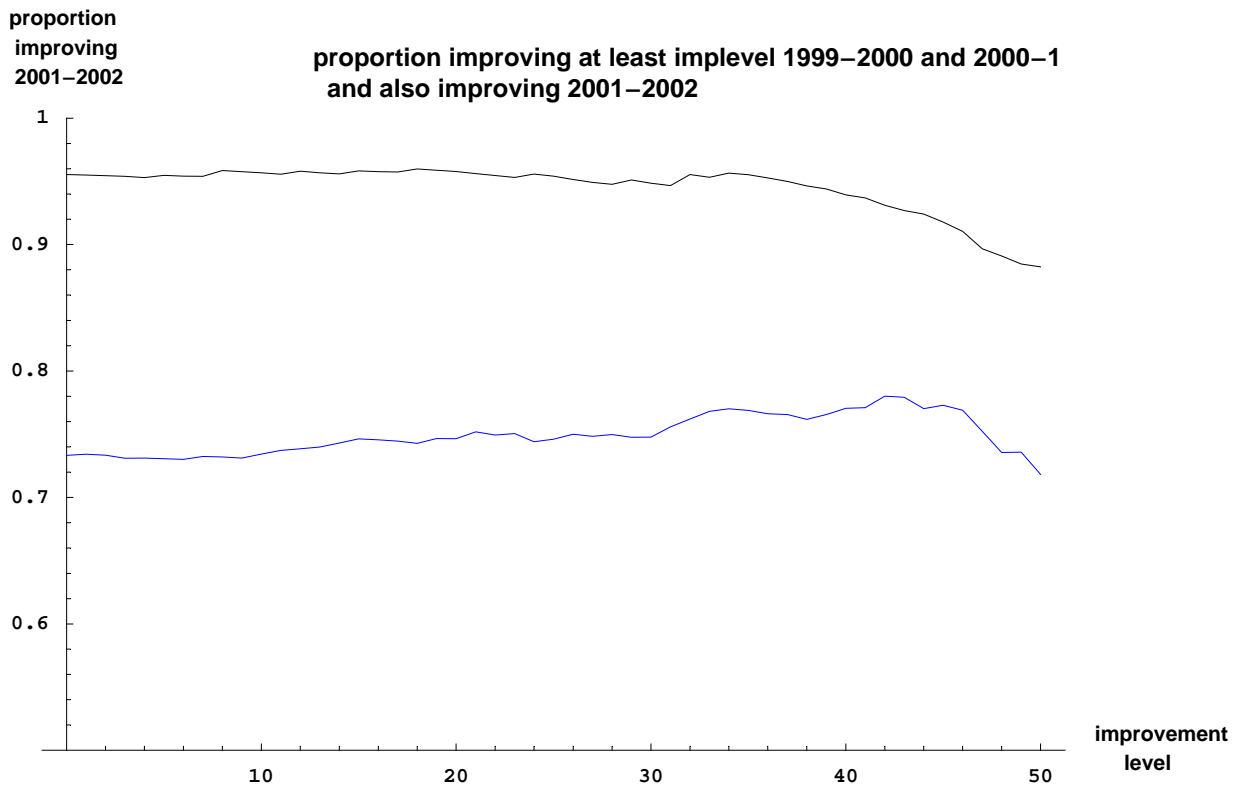


Table 7
 Consecutive Improvement for Los Angeles Unified Elementary Schools (n=418)

ImpLevel 1999-2000	Number exceeding ImpLevel	Three year Improvement 1999-2001	
		Proportion of those improving 2000-2001	Amount of Improvement 2000-2001 {lowest decile lower quartile median upper quartile}
0	406	0.938	4. 19.6 36.9 56.2
25	321	0.941	4.1 19.8 36.9 57.1
50	149	0.926	3.1 17.8 35.6 57.1
75	39	0.974	6.4 24.2 41.2 65.8
100	9	1.	12.2 30.2 54.4 78.8
ImpLevel 1999-2000 and 2000-2001	Number exceeding both ImpLevels	Fourth-year Improvement, 1999-2002	
		Proportion of those improving 2001-2002	Amount of Improvement 2001-2002 {lowest decile lower quartile median upper quartile}
0	381	0.955	9. 24.1 45.6 62.4
25	218	0.954	8.8 25. 45.6 59.2
50	51	0.882	-2.1 24.2 40.8 55.7

Table 8

Consecutive Improvement for California Elementary Schools (n=4658)

ImpLevel 1999-2000	Number exceeding ImpLevel	Three year Improvement 1999-2001	
		Proportion of those improving 2000-2001	Amount of Improvement 2000-2001 {lowest decile lower quartile median upper quartile}
0	4321	0.785	-11.5 2.8 18. 36.3
25	3098	0.763	-13.5 1.2 17.4 35.5
50	1459	0.737	-18.5 -0.8 16.2 35.5
75	467	0.728	-19.5 -1.6 16.4 36.5
100	129	0.674	-30.4 -6.7 16. 41.
ImpLevel 1999-2000 and 2000-2001	Number exceeding both ImpLevels	Fourth-year Improvement, 1999-2002	
		Proportion of those improving 2001-2002	Amount of Improvement 2001-2002 {lowest decile lower quartile median upper quartile}
0	3390	0.733	-14.6 -1. 13.9 31.
25	1201	0.746	-15.3 -0.3 15.9 34.1
50	181	0.718	-18. -1.5 19. 40.2

Exhibit 3. Consecutive Improvement for SD Subgroups in
High SD LAUSD Elementary Schools (n=353)
1999-2002

=====
Three year Improvement 1999-2001

SD Subgroups improving 1999-2000: 341
Proportion of those also improving 2000-2001: 0.944
Amount of Improvement 2000-2001
{lowest decile lower quartile median upper quartile}
11.3 24.3 42.8 63.9

SD Subgroups improving at least the statewide median (44 points)
in 1999-2000: 174
Proportion of those also improving 2000-2001: 0.92
Amount of Improvement 2000-2001
{lowest decile lower quartile median upper quartile}
4.6 22.1 41.8 61.3

Fourth-year Improvement, 1999-2002
SD Subgroups improving both in 1999-2000 and 2000-2001: 322
Proportion of those also improving 2001-2002: 0.972
Amount of Improvement 2001-2002
{lowest decile lower quartile median upper quartile}
15.1 32.7 50.3 65.7

SD Subgroups improving at least the statewide median (44 points)
1999-2000 and statewide median (28 points) 2000-2001: 118
Proportion of those also improving 2001-2002: 0.949
Amount of Improvement 2001-2002
{lowest decile lower quartile median upper quartile}
10.9 26.7 46.2 61.7
=====

Exhibit 4.

Consecutive Improvement for SD Subgroups in High SD
California Elementary Schools (n=2092)

=====
Three year Improvement 1999-2001

SD Subgroups improving 1999-2000: 1966
Proportion of those also improving 2000-2001: 0.816
Amount of Improvement 2000-2001
{lowest decile lower quartile median upper quartile}
-12.2 7.6 26.8 48.2

SD Subgroups improving at least the statewide median (44 points)
in 1999-2000: 1052
Proportion of those also improving 2000-2001: 0.779
Amount of Improvement 2000-2001
{lowest decile lower quartile median upper quartile}
-16.2 3.5 22.3 44.4

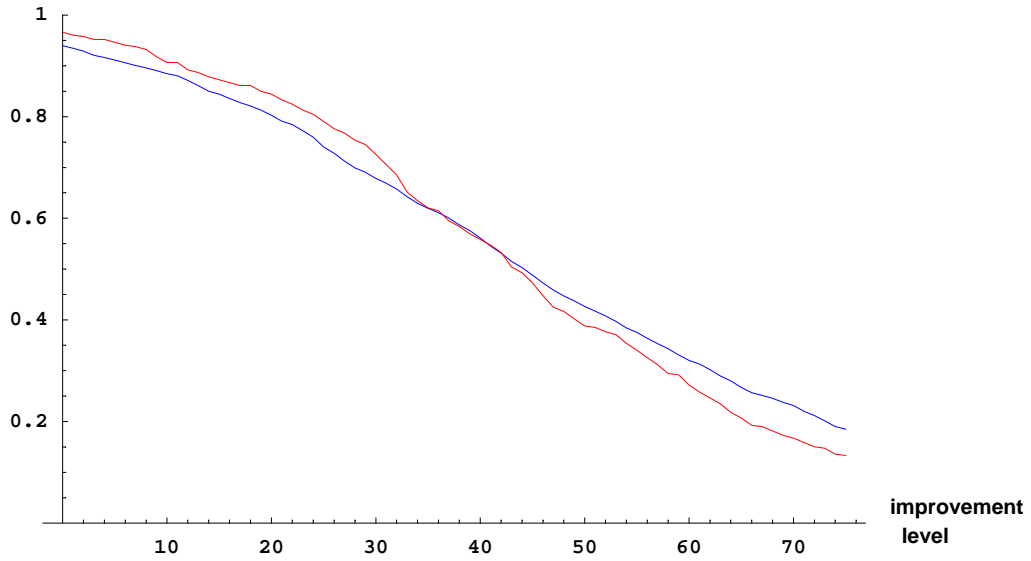
Fourth-year Improvement, 1999-2002
SD Subgroups improving both in 1999-2000 and 2000-2001: 1605
Proportion of those also improving 2001-2002: 0.824
Amount of Improvement 2001-2002
{lowest decile lower quartile median upper quartile}
-11.1 7.2 26.7 45.1

SD Subgroups improving at least the statewide median (44 points)
1999-2000 and statewide median (28 points) 2000-2001: 463
Proportion of those also improving 2001-2002: 0.799
Amount of Improvement 2001-2002
{lowest decile lower quartile median upper quartile}
-12.9 4.3 25.6 44.3

Figure 3

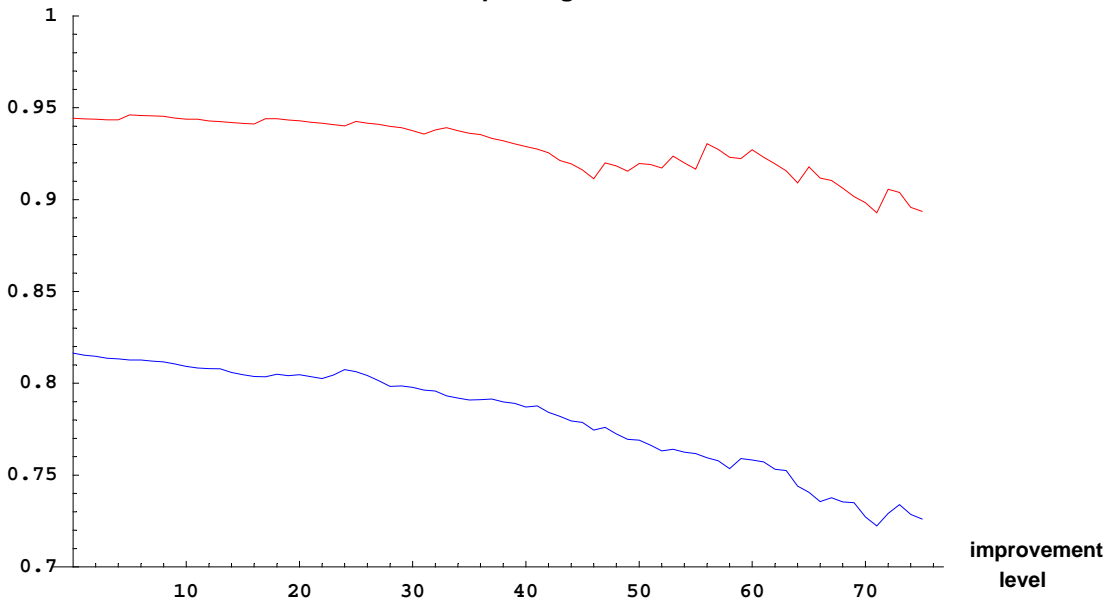
SD Subgroups in HighSD Elementary Schools; LAUSD (red), CA (blue)

proportion improving
implevel 1999–2000



proportion
improving
2000–2001

proportion improving at least implevel 1999–2000
and also improving 2000–2001



Improvement
2000–2001

Median, Quartiles of 2000–2001 Improvement
for schools improving at least implevel 1999–2000

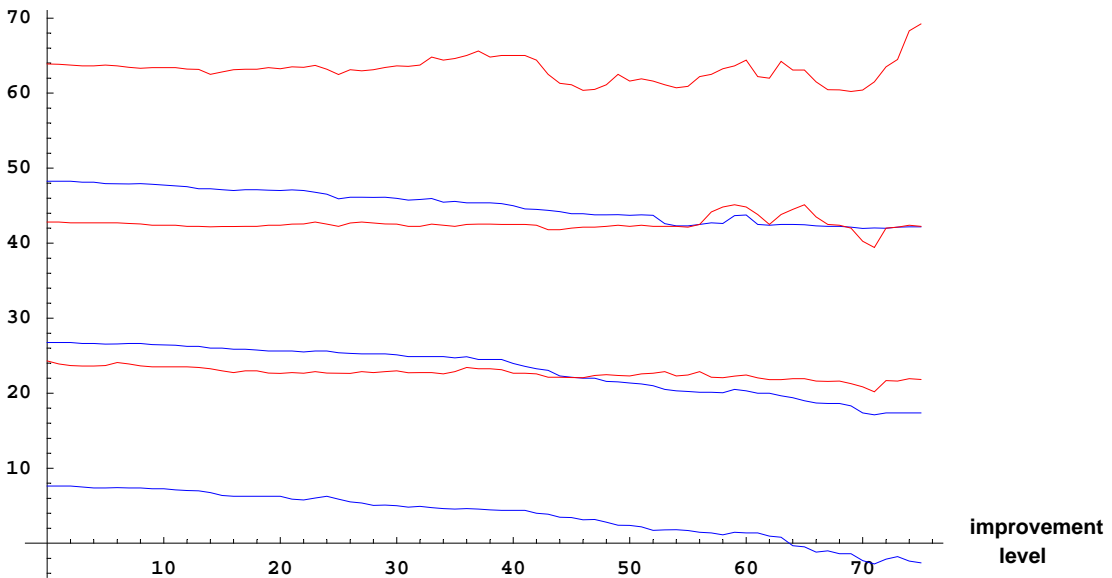


Figure 4.

SD Subgroups in HighSD Elementary Schools (Year 4); LAUSD (red), CA (blue)

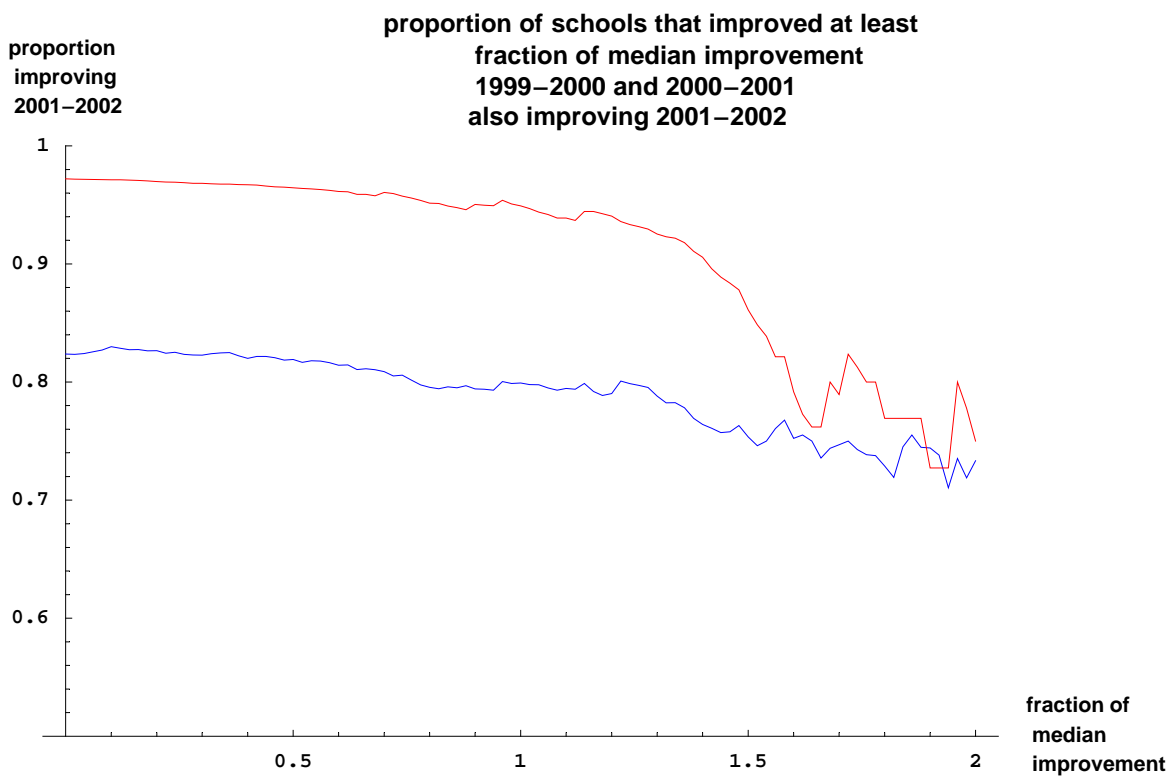
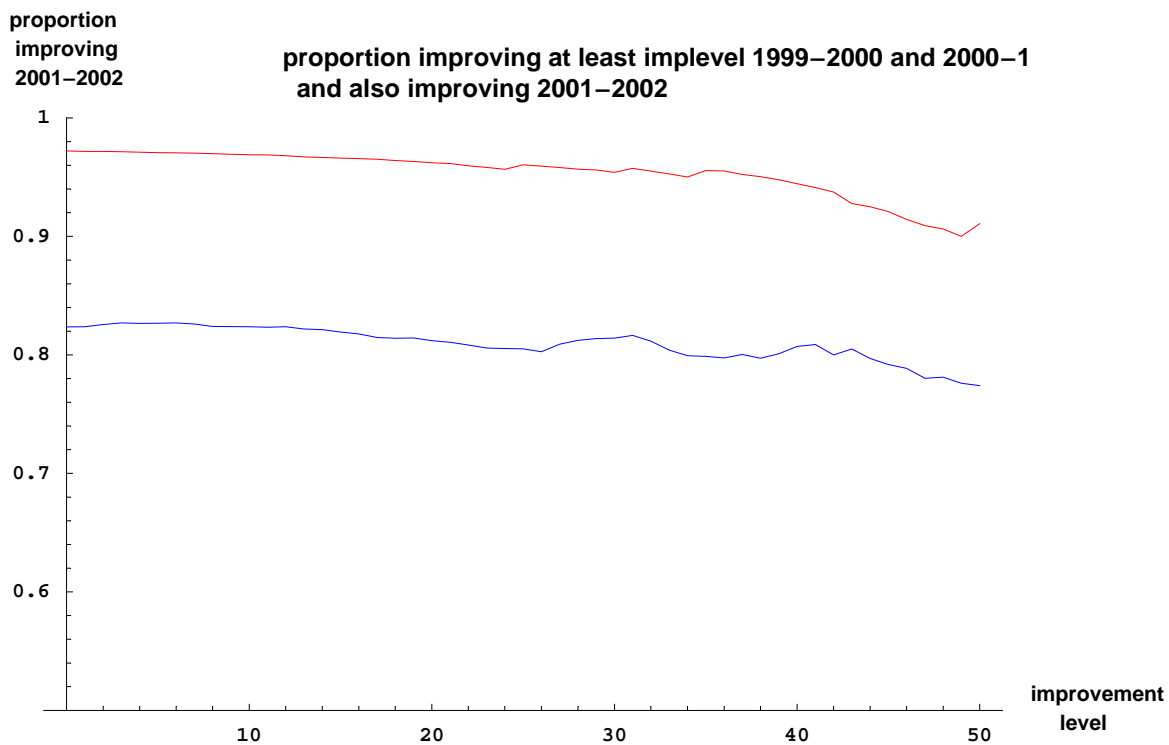


Table 9. Consecutive Improvement for SD Subgroups in High SD
 Los Angeles Unified Elementary Schools (n=353)

Three year Improvement 1999-2001			
ImpLevel 1999-2000	Number exceeding ImpLevel	Proportion of those improving 2000-2001	Amount of Improvement 2000-2001 {lowest decile lower quartile median upper quartile}
0	341	0.944	11.3 24.3 42.8 63.9
25	279	0.943	8.9 22.7 42.2 62.5
50	137	0.92	4.4 22.3 42.2 61.6
75	47	0.894	1.7 21.8 42.2 69.2
100	11	0.909	8.6 21.6 42.2 70.3
Fourth-year Improvement, 1999-2002			
ImpLevel 1999-2000 and 2000-2001	Number exceeding both ImpLevels	Proportion of those improving 2001-2002	Amount of Improvement 2001-2002 {lowest decile lower quartile median upper quartile}
0	322	0.972	15.1 32.7 50.3 65.7
25	202	0.96	14.2 29.9 47.3 61.5
50	56	0.911	6.4 24.3 41.2 58.5

Table 10. Consecutive Improvement for SD Subgroups in High SD California Elementary Schools (n=2092)

ImpLevel 1999-2000	Number exceeding ImpLevel	Three year Improvement 1999-2001	
		Proportion of those improving 2000-2001	Amount of Improvement 2000-2001 {lowest decile lower quartile median upper quartile}
0	1966	0.816	-11.9 7.6 26.8 48.2
25	1549	0.806	-13. 6. 25.3 46.
50	892	0.769	-18.4 2.1 21.3 43.8
75	387	0.726	-22. -3.7 17.4 42.1
100	136	0.684	-27.5 -5.8 20.9 42.2
ImpLevel 1999-2000 and 2000-2001	Number exceeding both ImpLevels	Fourth-year Improvement, 1999-2002	
		Proportion of those improving 2001-2002	Amount of Improvement 2001-2002 {lowest decile lower quartile median upper quartile}
0	1605	0.824	-10.1 7.2 26.7 45.3
25	780	0.805	-12.9 5.6 26. 43.9
50	177	0.774	-18.1 3.2 25. 47.1

Table 11. Consecutive Improvement for Hispanic subgroups in Los Angeles Unified Elementary Schools (n=336)

Three year Improvement 1999-2001			
ImpLevel 1999-2000	Number exceeding ImpLevel	Proportion of those improving 2000-2001	Amount of Improvement 2000-2001 {lowest decile lower quartile median upper quartile}
0	330	0.973	13.6 28.6 45.2 66.
25	270	0.97	12.7 27.1 43.2 65.2
50	158	0.962	11.1 25. 43.2 65.2
75	54	0.981	14.1 26.8 43.1 65.2
100	8	1.	11.4 21.7 34.6 72.2
Fourth-year Improvement, 1999-2002			
ImpLevel 1999-2000 and 2000-2001	Number exceeding both ImpLevels	Proportion of those improving 2001-2002	Amount of Improvement 2001-2002 {lowest decile lower quartile median upper quartile}
0	321	0.972	18.8 33.3 51.6 67.7
25	208	0.971	20. 34.5 51.5 64.8
50	67	0.925	7.8 31.7 48.3 60.4

Table 12
 Consecutive Improvement for Hispanic Subgroups in HighSD
 Los Angeles Unified Elementary Schools (n=324)

ImpLevel 1999-2000	Number exceeding ImpLevel	Three year Improvement 1999-2001	
		Proportion of those improving 2000-2001	Amount of Improvement 2000-2001 {lowest decile lower quartile median upper quartile}
0	318	0.975	14. 29.9 46.5 66.1
25	263	0.973	13. 28.5 43.6 65.8
50	153	0.967	11.7 25.6 45.1 66.1
75	53	0.981	14.1 27. 43.6 65.6
100	7	1.	10.1 21.2 43.6 75.

ImpLevel 1999-2000 and 2000-2001	Number exceeding both ImpLevels	Fourth-year Improvement, 1999-2002	
		Proportion of those improving 2001-2002	Amount of Improvement 2001-2002 {lowest decile lower quartile median upper quartile}
0	310	0.974	21.6 34.5 52.1 68.1
25	204	0.971	21.3 34.5 51.6 64.8
50	67	0.925	7.8 31.7 48.3 60.4

Table 13. Achievement Gaps, differences in percents and differences in percentiles, White vs Hispanic, SAT-9 Grade 4 Reading 1999-2002 with SD conditioning

White vs Hispanic, 1999-2002

		Proportion at or above cut-score (PAC)					
		1999			2002		
	PAC25	PAC50	PAC75		PAC25	PAC50	PAC75
Hispanic	0.380	0.136	0.037	Hispanic	0.587	0.275	0.084
White	0.828	0.608	0.358	White	0.889	0.707	0.452
gap	0.449	0.473	0.321	gap	0.302	0.432	0.369

diff2002 - diff1999		
PAC25	PAC50	PAC75
-0.147	-0.041	0.0478

		Percentiles of NPR Distribution								
		1999					2002			
	10th	25th	50th	75th	90th	10th	25th	50th	75th	90th
Hispanic	2.6	6.4	16.2	34.1	56.4	5.8	14.4	30.5	51.6	71.1
White	14.9	33.3	61.3	82.4	93.9	22.1	43.2	70.5	85.9	95.

SD White vs SD Hispanic, 1999-2002

		Proportion at or above cut-score (PAC)					
		1999			2002		
	PAC25	PAC50	PAC75		PAC25	PAC50	PAC75
Hispanic	0.366	0.123	0.03	Hispanic	0.578	0.263	0.075
White	0.681	0.391	0.145	White	0.773	0.491	0.218
gap	0.315	0.268	0.115	gap	0.196	0.229	0.143

diff2002 - diff1999		
PAC25	PAC50	PAC75
-0.119	-0.039	0.028

		Percentiles of NPR Distribution								
		1999					2002			
	10th	25th	50th	75th	90th	10th	25th	50th	75th	90th
Hispanic	2.5	6.2	15.7	32.3	54.1	5.6	14.1	30.	50.6	70.4
White	7.2	18.7	39.0	63.3	79.9	11.7	26.4	48.1	70.7	84.9

=====

Figure 5

cdf 1999 (red) 2002 White Hispanic

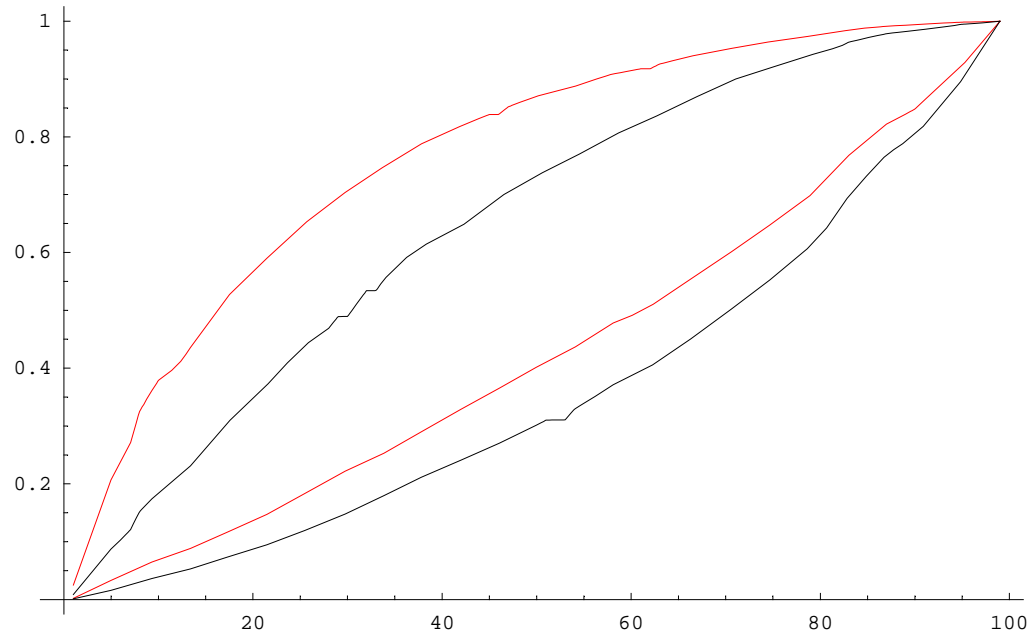
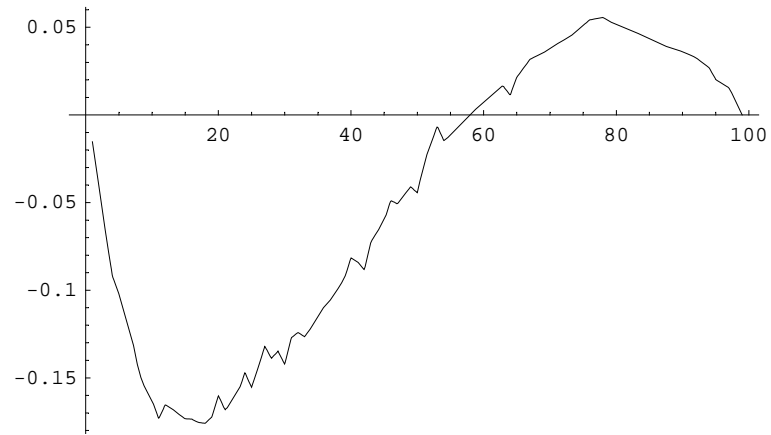


Figure 6

vertical, difference in percents gap closing (negative) 1999, 2002



horizontal, difference in percentiles, gap closing (negative) 1999, 2002

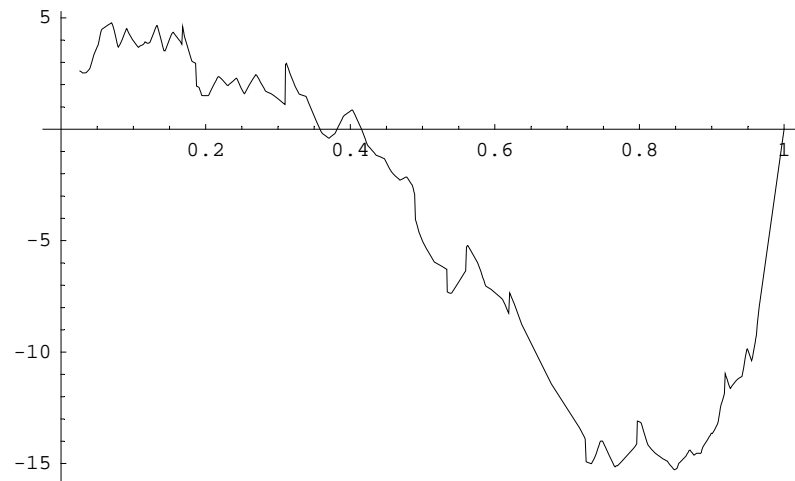


Figure 7

cdf 1999 (red) 2002 WhiteSD HispanicSD

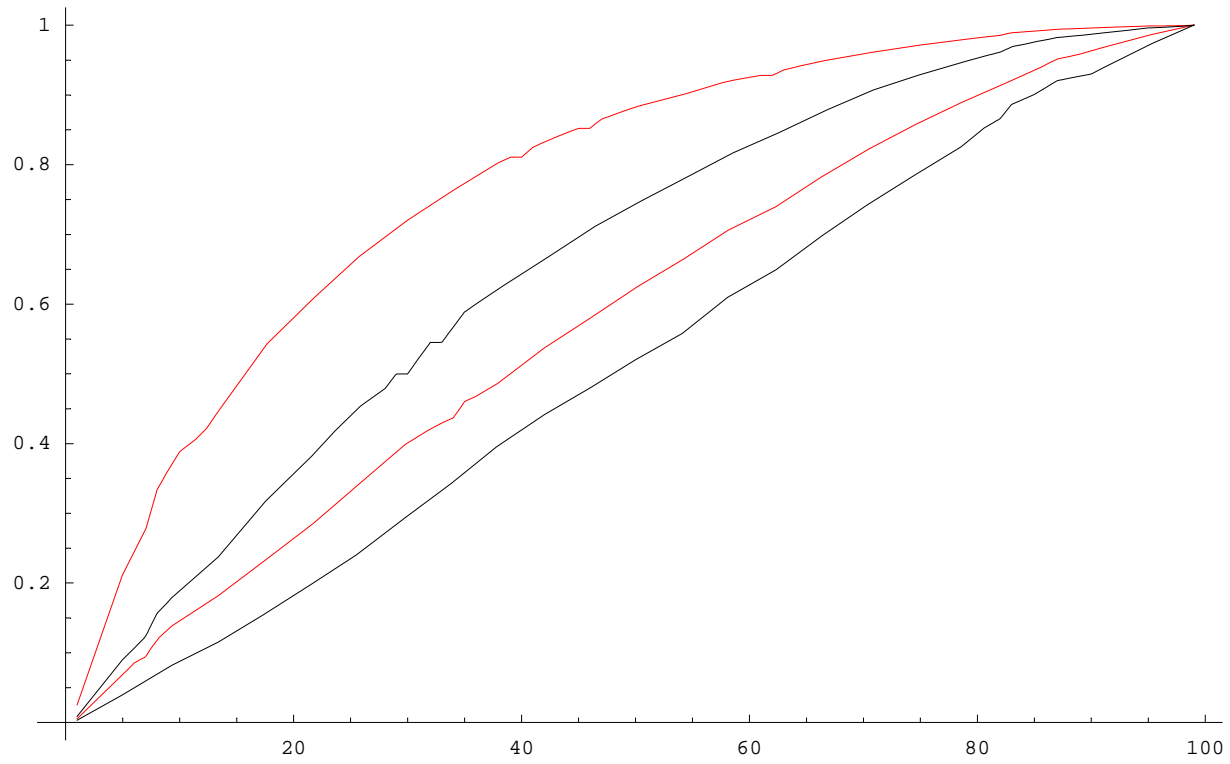
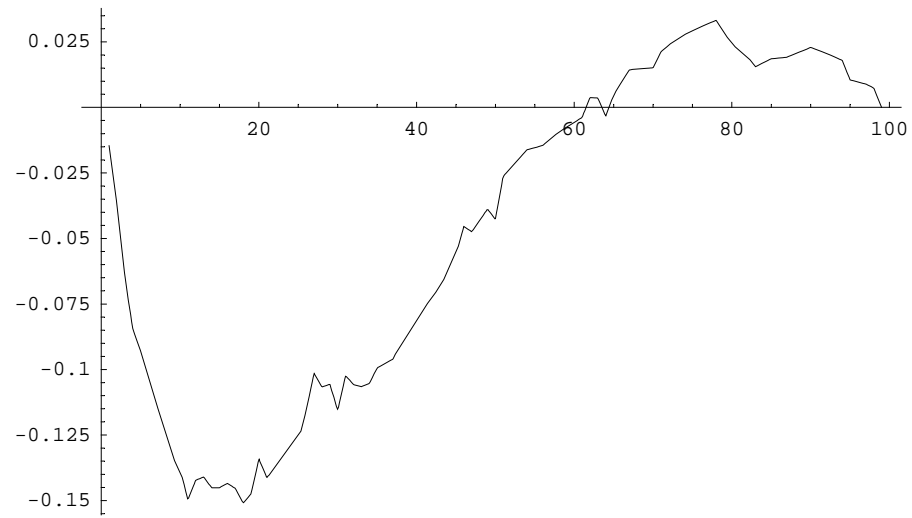


Figure 8

vertical, difference in percents, gap closing (negative) 1999, 2002



horizontal, difference in percentiles, gap closing (negative) 1999, 2002

